



March 8, 2016

Dear HFS IRIS Clients:

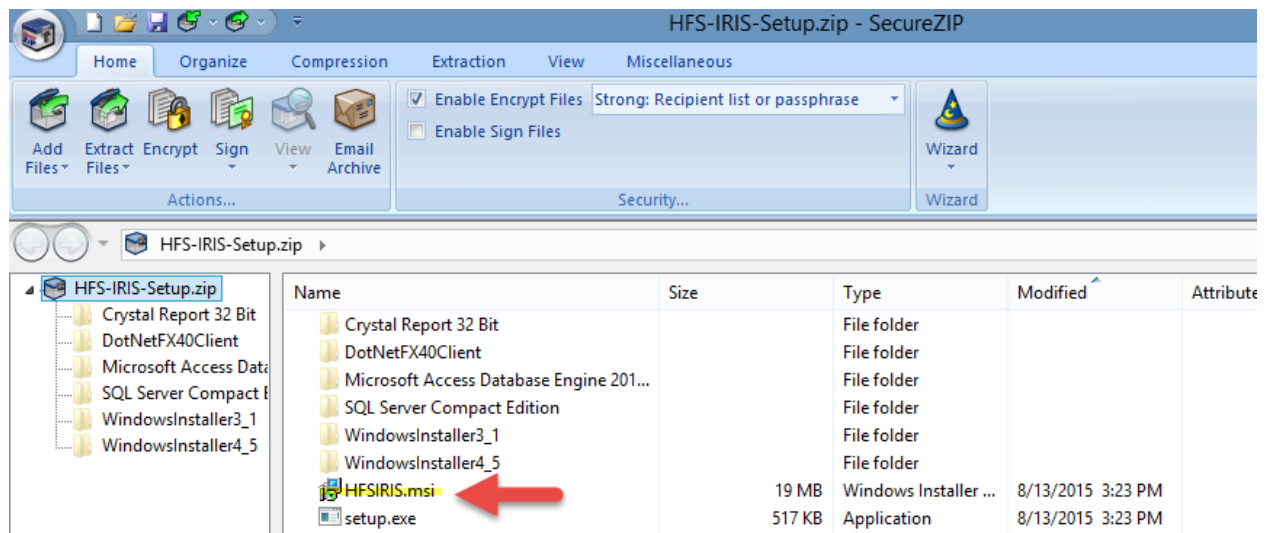
We recently posted a new update for the IRIS SQL system. The changes are summarized below.

IRIS, version 5.5.0.0 (please note that we posted a v5.4.0.0 last Friday but before a notice was sent out, we had to fix a couple of items and that is why 5.5.0.0 is listed here, you did not miss a 5.4.0.0):

- D12048 – IRIS - Added a csv export file with the E Part A and E-4 summarized FTE count to be utilized in the MCRIF32 system to compare calculated IRIS FTEs to the cost report FTEs via Special Report 923 (SR923).
- D12220 – IRIS - Corrected an issue when replacing a cost reporting period that is different than what was originally imported. For example, client imported a 1-1-15 to 6-30-15 M & A file then realized the FY should have been 1-1-15 to 12-31-15. He deleted the provider and FY but when importing the new file, it says imported but cannot see data or run reports. This is now fixed and working properly.
- D12221 – IRIS - Corrected an issue with Single File Import and the selection of "Import only if all data is new" as it was causing error messages and not importing.
- D12256 – IRIS - Revised the Audit Report E Part A/E-4 summary page for Children's Hospitals to no longer populate FTEs for IME on E Part A.
- D12273 – IRIS - Changed the naming convention of the M & A dbf files for submission to Mxxxxxx_YYYY-MM-DD(optional additional text allowed here).dbf and Axxxxxx_YYYY-MM-DD(optional additional text allowed here).dbf which was relayed on the 3-2-16 CMS / Vendor call. This works with the Import of files.
- D12296 – IRIS - Corrected the Audit Report when sorted by Name, when 2 residents have the same last name, the assignments by name is accurate but the FTE total by name adds the 2 residents improperly, this is now fixed.
- D12297 – IRIS - Updated the OIG Report output when a provider has no residents found to include the Provider # and FY selected on the report.
- D12298 – IRIS - Updated the naming convention of the Residency Report Summary detail to be "Residency_Summ_#####_MMDDYYYY.pdf".
- D12299 – IRIS - Corrected an issue when a user opts to delete a specific provider and FY, they re-import was not able to be imported and recognized. Had to do with the provider table in the database, this is now working properly.
- D12300 – IRIS - Corrected an issue with the Net Sync where we were not recognizing the network drive and issuing an error message.

If you are currently on version 5.2.0.0 or later, you can now retrieve the updates from the Home Page of the IRIS system with the Check For Updates box in the top right corner of the page, just select the Click Here button.

If you are on an earlier version, you will need to go to our website www.hfssoft.com and go to the download page. You may be asked to log in. You will want to select the IRIS link to download. If you have already installed the IRIS software, when you retrieve the download, you will see the following inside the zipped file (ignore the dates below); you will only need to run the HFSIRIS.msi. If you have not installed the system yet, then run the setup.exe.



A copy of the IRIS User Guide is located at the following link:

<https://www.hfssoft.com/doc/HFS%20IRIS%20SQL%20User%20Guide.pdf>

If you have any questions or problems with the above, please let me know.

Thanks,
Luke DiSabato
(888) 216-6041